



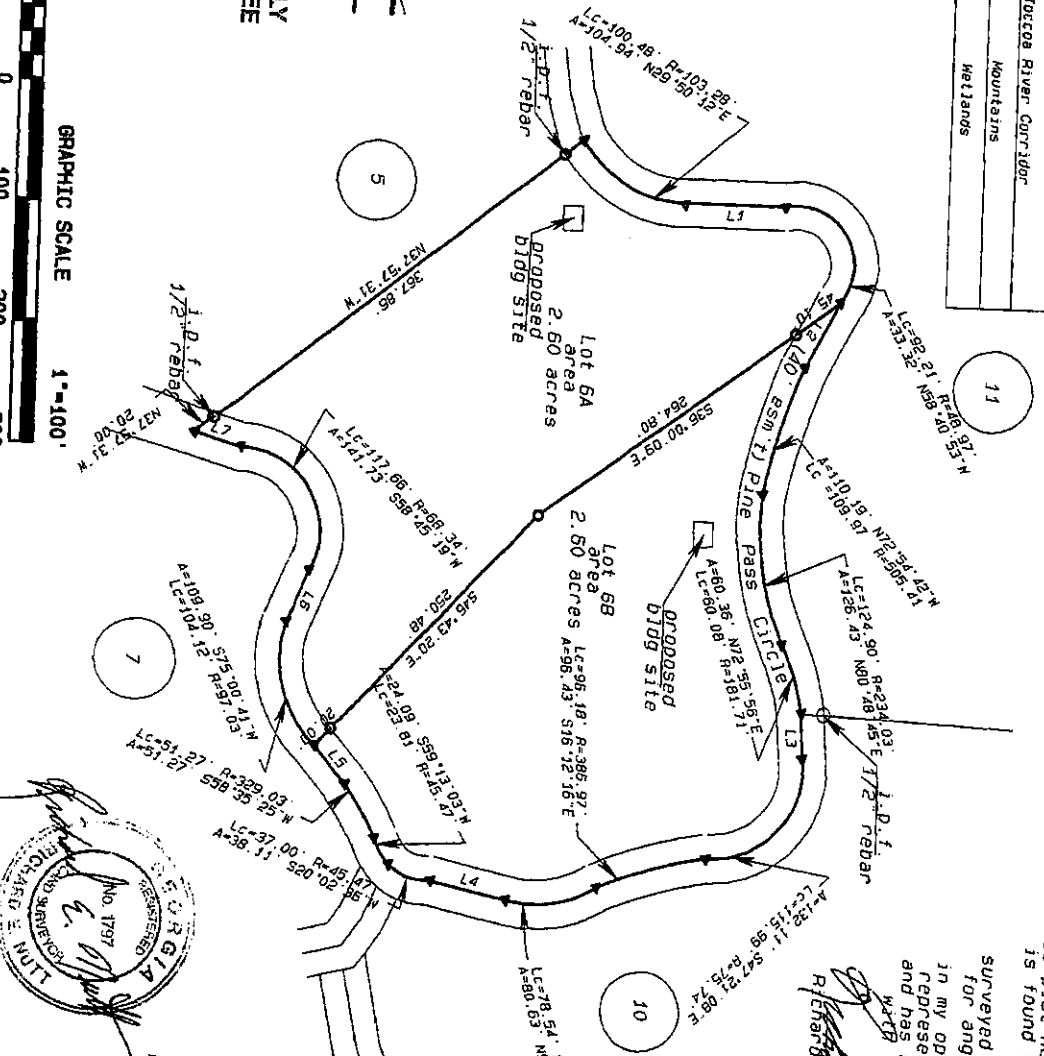
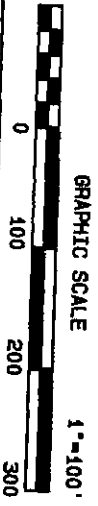
PROTECTION DISTRICTS	
as per information furnished by Fannin County	
Yes/No	
X	Etchley River Watershed Water Supply
X	Toccoa River Watershed Water Supply
X	Toccoa River Corridor
X	Mountains
X	Wetlands

LINE	BEARING	DISTANCE
L1	N0°04'47"E	86.16ft
L2	S62°19'28"E	60.73ft
L3	N65°10'24"E	37.24ft
L4	S11°46'10"W	68.77ft
L5	S49°54'19"W	41.86ft
L6	N67°31'39"W	47.95ft
L7	S17°56'53"W	38.81ft

APPROVED  
 FANNIN COUNTY LAND  
 DEVELOPMENT OFFICE  
*Maria Uebersch*  
 DATE Oct 11, 2005

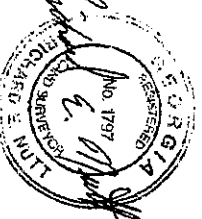
**FOR RECORDING ONLY  
 DOES NOT GUARANTEE  
 A BUILDABLE LOT**

Legend  
 Iron pin set  
 o, c, f open top pipe found  
 j, d, f iron pin found  
 p, j property line  
 c, j center line



1/2" redars set  
 at all points unless  
 otherwise noted

the data upon which this survey is based has a  
 relative closure precision of one foot in 36,844  
 feet, and a relative angular error of 3" per angle  
 point and was adjusted using the compass rule  
 this plat has been calculated for closure and  
 is found to be accurate within one foot  
 in 493,084 feet  
 surveyed with Topcon 212 total station  
 for angular and linear measurements  
 in my opinion this plat is a correct  
 representation of the land plotted  
 and has been prepared in accordance  
 with the minimum standards and  
 requirements of the  
*[Signature]*  
 Richard E. Inuit Ga. P.L.S. # 1797



**POLARIS SURVEYORS LLC**  
 103 Evans Drive Morganton, GA 30560  
 Mailing Address  
 P.O. Box 100 Morganton, Ga. 30560  
 706-374-3422  
 Survey for  
**Nathan Nicholson**  
 Lot 6  
 Mountain View Estates  
 Fannin County, Georgia  
 8th District 1st Section  
 part of Land Lot 67  
 total acres 5.20  
 field work completed 6-13-2005  
 7-11-2005  
 file #0505019R

*[Signature]*  
 BK-D-246-3  
 Doc ID: 10 000215510001 Type: PLT  
 Fee Amt: \$0.2008 dt 01:48:00 PM  
 Fannin Co. Clerk of Superior Court  
 DANA CHRISTIAN Clerk of Courts