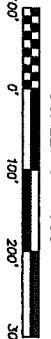


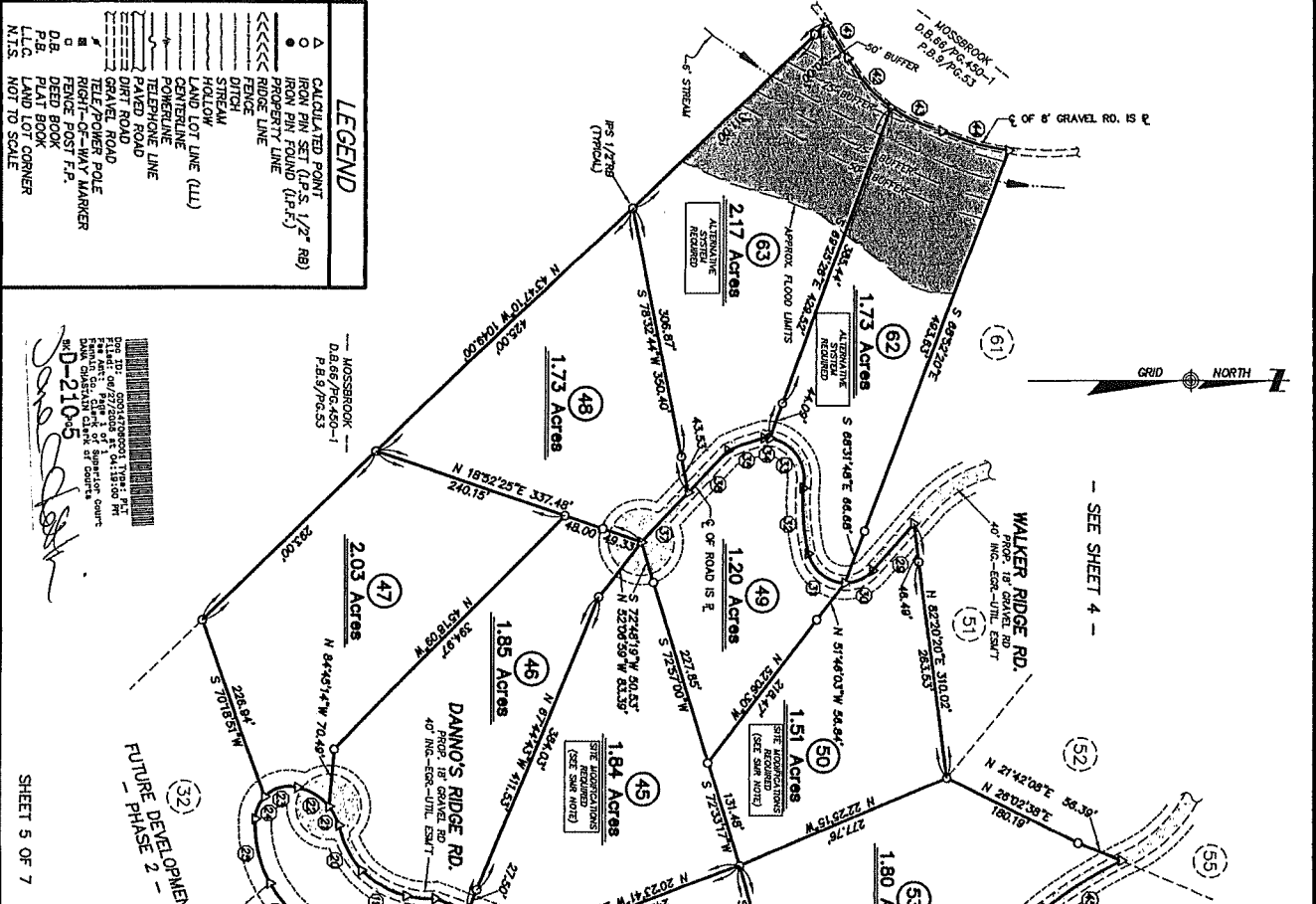
NATURE'S COURT YARD

FINAL PLAY FOR
 PHASE 1
 LAND LOTS 63 & 64 8th DISTRICT 1st SECTION
 FANNIN COUNTY, GA. APRIL 15, 2005
 SCALE: 1" = 100'

PREPARED BY: LANE S. BISHOP AND ASSOCIATES
 P.O. BOX 1506 BLUE RIDGE GA. 30513
 BLUE RIDGE, GA. 30513
 PHONE: (706) 632-3919
 FAX: (706) 632-6873
 GA. R.L.S. #1575 GA. R.L.S. #2536



Course	Bearing	Distance
1	N 59°11'31" E	51.15'
2	N 48°30'32" E	Ch: 82.17'
3	N 65°17'56" E	Ch: 42.44'
4	N 16°12'59" E	Ch: 83.80'
5	Road: 330.95'	Ch: 70.31'
6	S 57°08'34" W	Ch: 88.06'
7	Road: 54.89'	Ch: 72.43'
8	N 79°30'47" W	Ch: 49.03'
9	N 70°05'25" W	Ch: 7.08'
10	S 81°02'15" W	Ch: 70.74'
11	S 42°24'45" W	Ch: 74.08'
12	S 60°24'45" W	Ch: 47.53'
13	Road: 47.76'	Ch: 45.14'
14	N 61°10'01" W	Ch: 47.02'
15	N 48°23'52" W	Ch: 40.08'
16	N 79°17'51" W	Ch: 86.06'
17	Road: 51.05'	Ch: 86.06'
18	S 40°23'50" W	Ch: 57.61'
19	Road: 51.05'	Ch: 48.28'
20	Road: 51.05'	Ch: 48.03'
21	S 20°49'11" W	Ch: 23.17'
22	S 68°22'22" E	Ch: 35.10'
23	S 30°59'59" W	Ch: 35.22'
24	Road: 68.22'	Ch: 44.54'
25	S 15°26'53" E	Ch: 26.44'
26	S 87°23'18" E	Ch: 45.79'
27	Road: 40.16'	Ch: 48.03'
28	S 87°23'18" E	Ch: 43.03'
29	N 76°56'43" W	Ch: 28.45'
30	N 76°56'43" W	Ch: 28.45'
31	Road: 149.44'	Ch: 80.87'
32	N 81°07'12" E	Ch: 174.41'
33	N 49'18'32" E	Ch: 190.80'
34	S 85°19'38" E	Ch: 72.80'
35	S 65°19'38" E	Ch: 72.80'
36	S 22°57'20" E	Ch: 37.71'
37	Road: 47.70'	Ch: 37.71'
38	S 37°34'21" W	Ch: 57.15'
39	Road: 47.70'	Ch: 62.03'
40	S 89°07'17" W	Ch: 79.12'
41	S 58'15" W	Ch: 72.42'
42	S 100°19'09" W	Ch: 50.21'
43	S 19°06'21" E	Ch: 47.01'
44	S 46°21'25" E	Ch: 62.78'
45	S 46°21'25" E	Ch: 62.68'
46	N 14°46'55" W	Ch: 42.05'
47	N 32°47'27" W	Ch: 28.65'
48	N 36°31'41" E	Ch: 35.18'
49	N 48°10'47" E	Ch: 62.17'
50	Road: 189.02'	Ch: 82.85'
51	N 25°17'59" E	Ch: 82.85'
52	N 16°12'59" E	Ch: 70.31'
53	Road: 189.02'	Ch: 82.85'
54	S 32°47'27" W	Ch: 88.06'
55	S 32°47'27" W	Ch: 110.53'
56	S 32°47'27" W	Ch: 110.53'
57	S 32°47'27" W	Ch: 110.53'
58	S 32°47'27" W	Ch: 110.53'
59	S 32°47'27" W	Ch: 110.53'
60	S 32°47'27" W	Ch: 110.53'
61	S 32°47'27" W	Ch: 110.53'
62	S 32°47'27" W	Ch: 110.53'
63	S 32°47'27" W	Ch: 110.53'
64	S 32°47'27" W	Ch: 110.53'
65	S 32°47'27" W	Ch: 110.53'
66	S 32°47'27" W	Ch: 110.53'
67	S 32°47'27" W	Ch: 110.53'
68	S 32°47'27" W	Ch: 110.53'
69	S 32°47'27" W	Ch: 110.53'
70	S 32°47'27" W	Ch: 110.53'
71	S 32°47'27" W	Ch: 110.53'
72	S 32°47'27" W	Ch: 110.53'
73	S 32°47'27" W	Ch: 110.53'
74	S 32°47'27" W	Ch: 110.53'
75	S 32°47'27" W	Ch: 110.53'
76	S 32°47'27" W	Ch: 110.53'
77	S 32°47'27" W	Ch: 110.53'
78	S 32°47'27" W	Ch: 110.53'
79	S 32°47'27" W	Ch: 110.53'
80	S 32°47'27" W	Ch: 110.53'
81	S 32°47'27" W	Ch: 110.53'
82	S 32°47'27" W	Ch: 110.53'
83	S 32°47'27" W	Ch: 110.53'
84	S 32°47'27" W	Ch: 110.53'
85	S 32°47'27" W	Ch: 110.53'
86	S 32°47'27" W	Ch: 110.53'
87	S 32°47'27" W	Ch: 110.53'
88	S 32°47'27" W	Ch: 110.53'
89	S 32°47'27" W	Ch: 110.53'
90	S 32°47'27" W	Ch: 110.53'
91	S 32°47'27" W	Ch: 110.53'
92	S 32°47'27" W	Ch: 110.53'
93	S 32°47'27" W	Ch: 110.53'
94	S 32°47'27" W	Ch: 110.53'
95	S 32°47'27" W	Ch: 110.53'
96	S 32°47'27" W	Ch: 110.53'
97	S 32°47'27" W	Ch: 110.53'
98	S 32°47'27" W	Ch: 110.53'
99	S 32°47'27" W	Ch: 110.53'
100	S 32°47'27" W	Ch: 110.53'



OFFICE: R.O. FIELD: L.O.S. DRAWN BY: K.E. 4/15/2005
 ORD. FILE DWG. FILE J.O.# FLD. BOOK
 FNB1247 NCP185 040528T 26(94)

LANE S. BISHOP AND ASSOCIATES
 LAND AND ENGINEERING SURVEYS
 P.O. BOX 1506 BLUE RIDGE GA. 30513
 PHONE: (706) 632-3919 FAX: (706) 632-6873
 REGISTERED SURVEYOR: GA. R.L.S. #1575 & 2536
 TN. R.L.S. #1924 NC. R.L.S. #7545