

LEGEND

- IPS = 1/2" REBAR PIN SET
- RFB = REBAR PIN FOUND
- OTF = OPEN TOP PIPE
- CTP = CROWN TOP PIPE
- LLL = LAND LOT LINE
- P.L. = PROPERTY LINE
- CL = CENTERLINE
- BL = BUILDING LINE
- R/W = RIGHT-OF-WAY
- SSE = SANITARY SEWER EASEMENT
- DE = DRAINAGE EASEMENT
- LL = LAND LOT
- MH = MANHOLE
- CB = CATCH BASIN
- JB = JUNCTION BOX
- NW = HEADWALL
- DI = DRAIN INLET
- FD = FIRE HYDRANT
- E = INVERT ELEVATION
- FTE = FINISHED FLOOR ELEVATION
- BOC = BACK OF CURB
- EP = EDGE OF PAVEMENT
- S = SANITARY SEWER LINE / PIPE
- ST = STORM SEWER LINE / PIPE
- F = FENCE LINE
- FZ = FLOOD HAZARD ZONE LINE
- N/F = NOW OR FORMERLY
- DB/PG = DEED BOOK / PAGE
- LTP = U.C. TEL. PEDESTAL
- UPTP = U.C. POWER TRANSFORMER
- PP = POWER POLE
- GW = GUY WIRE
- RCF = RE-INFORCED CONC. PIPE
- CMP = CORRUGATED METAL PIPE
- WV = WATER VALVE
- WM = WATER METER
- CMF = CONCRETE MONUMENT FOUND

A WILD T1000 AND D1000 WERE USED TO OBTAIN THE LINEAR AND ANGULAR MEASUREMENTS USED IN THE PREPARATION OF THIS PLAT.

THE FIELD DATA UPON WHICH THIS MAP OR PLAT IS BASED HAS A CLOSURE PRECISION OF ONE FOOT IN 28,121 FEET AND AN ANGULAR ERROR OF 04" PER ANGLE POINT, AND WAS ADJUSTED USING THE LEAST SQUARES METHOD.

THIS MAP OR PLAT HAS BEEN CALCULATED FOR CLOSURE AND IS FOUND TO BE ACCURATE WITHIN ONE FOOT IN 124,248 FEET.

REFERENCES:

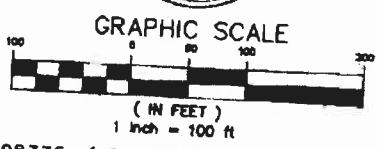
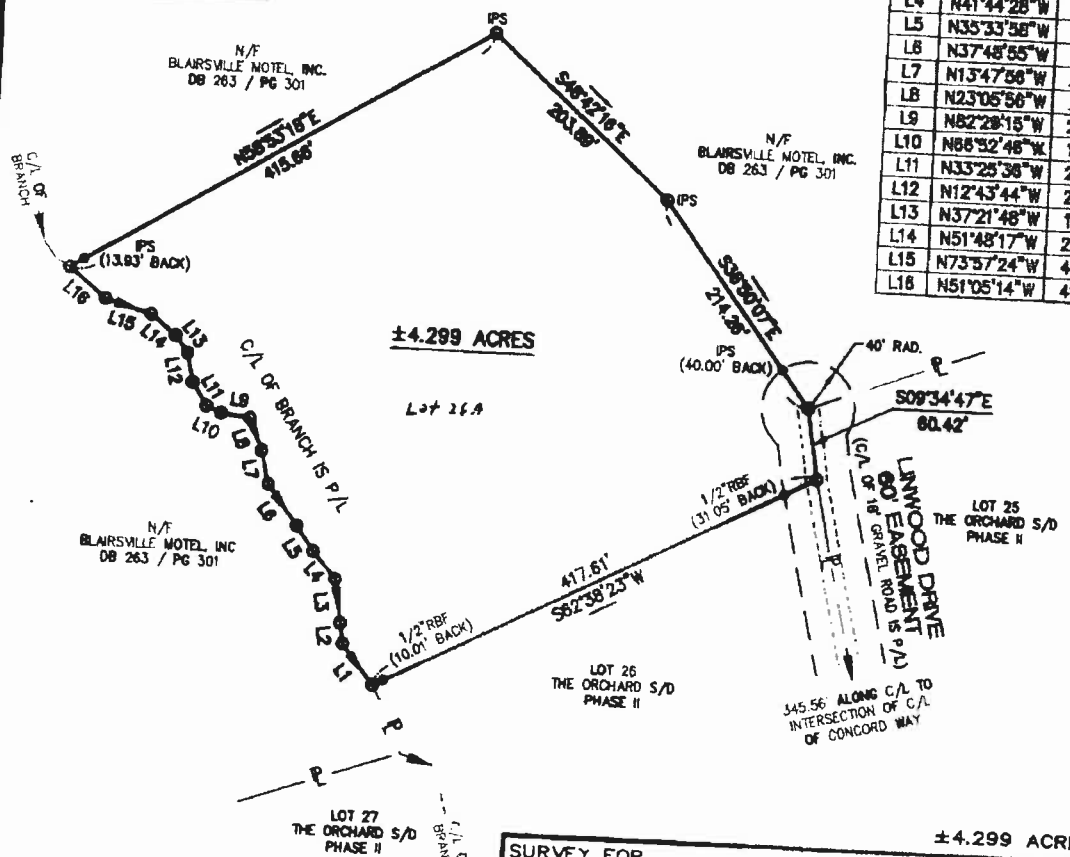
- 1) WARRANTY DEED RECORDED IN DEED BOOK 263, PAGE 301 OF UNION COUNTY RECORDS.

NOTES:

- 1) THIS PROPERTY DOES NOT LIE WITHIN A DESIGNATED FLOOD HAZARD AREA AS PER F.I.R.M. PANEL NO. 130254 0025 C, MAP REVISED DECEMBER 3rd, 1993. THIS SURVEY SUBJECT TO ALL RIGHT-OF-WAYS OR EASEMENTS SHOWN OR NOT SHOWN.
- 2) THIS PLAT PREPARED WITHOUT THE BENEFIT OF A TITLE REPORT.
- 3) THIS PLAT IS FOR THE EXCLUSIVE USE OF THE PARTY OR PARTIES SHOWN HEREON, AND IS NOT INTENDED FOR ANY OTHER THIRD PARTY.
- 4) 60' EASEMENTS ARE FOR INGRESS/EGRESS AND UTILITIES.

GEORGIA UNION COUNTY
CLERK'S OFFICE SUPERIOR COURT
FILED FOR RECORD AT 9:45 A.M.
April 12th, 2002, RECORDED
IN BOOK 49 PAGE 66
Odean Conley
Clerk

LINE	BEARING	LENGTH
L1	N38°08'34"W	43.27'
L2	N08°28'08"W	17.68'
L3	N08°10'46"W	37.52'
L4	N41°44'28"W	30.52'
L5	N35°33'58"W	25.79'
L6	N37°48'55"W	43.23'
L7	N13°47'56"W	28.83'
L8	N23°05'56"W	29.16'
L9	N82°28'15"W	25.43'
L10	N88°32'48"W	14.05'
L11	N33°25'38"W	23.43'
L12	N12°43'44"W	25.00'
L13	N37°21'48"W	18.16'
L14	N51°48'17"W	27.84'
L15	N73°57'24"W	41.33'
L16	N51°05'14"W	41.03'



98335 / 22077.DWG 98335.CRD

±4.299 ACRES

SURVEY FOR
**RON C. TRUEX
AND
LISA C. TRUEX**

TECH SERVICES, INC.

672-C BELL CREEK ROAD, P.O. BOX 669
HIAWASSEE, GEORGIA 30546
(706) 896-2000

244 YOUNG HARRIS ST, PO BOX 1781
BLAIRSVILLE, GEORGIA 30514
(706) 743-0032

Date: 3/20/02	Land Lot: 279	District: 9th	Sect. 1
County: UNION, GA.	Scale: 1" = 100'	Sheet No.	
Drawn By: LDM	Checked By: HSW		
Job Number: 22077	File Number:		

DATE OF FIELD SURVEY: 3/19/02