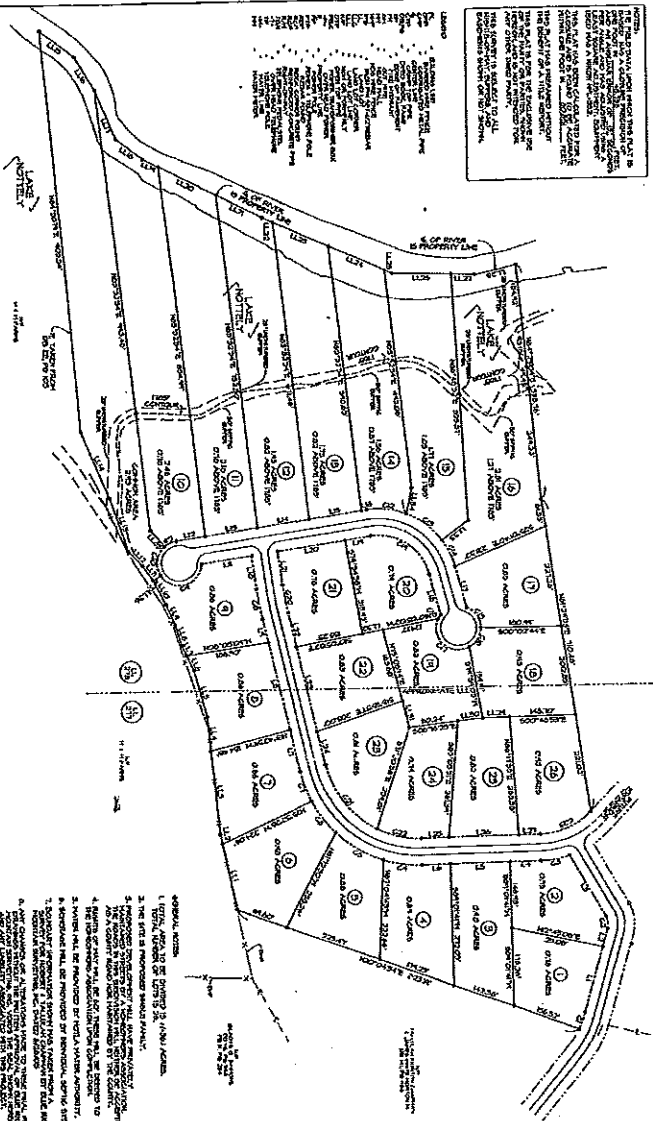


NO COMPENSATION IS MADE ON ANY LOT
 PRIOR TO THE COMMENCEMENT OF THE
 CONSTRUCTION OF THE PROJECT.

HEALTH DEPARTMENT APPROVAL
 THE HEALTH DEPARTMENT HAS REVIEWED
 THE PROPOSED LOTS AND HAS FOUND THEM
 TO BE IN ACCORDANCE WITH THE HEALTH
 DEPARTMENT REGULATIONS AND HAS
 ISSUED THIS APPROVAL SUBJECT TO THE
 FOLLOWING CONDITIONS:
 1. THE LOTS SHALL BE SEPARATED BY
 A 10' WIDE DRIVEWAY OR ALLEYWAY
 2. THE LOTS SHALL BE SEPARATED BY
 A 5' WIDE SIDEWALK OR DRIVEWAY
 3. THE LOTS SHALL BE SEPARATED BY
 A 5' WIDE DRIVEWAY OR ALLEYWAY
 4. THE LOTS SHALL BE SEPARATED BY
 A 5' WIDE DRIVEWAY OR ALLEYWAY

GEORGIA UNION COUNTY
 CLERK'S OFFICE SUPERIOR COURT
 FILED FOR RECORD AT 11:31 AM
 JANUARY 2, 1957, RECORDED
 IN BOOK 854, PAGE 118
John J. ...
 CLERK



THESE LOTS ARE TO BE SEPARATED BY
 A 10' WIDE DRIVEWAY OR ALLEYWAY
 A 5' WIDE SIDEWALK OR DRIVEWAY
 A 5' WIDE DRIVEWAY OR ALLEYWAY
 A 5' WIDE DRIVEWAY OR ALLEYWAY



OWNER/DEVELOPER:
 ROBERT & TALLULAH CHAPMAN
 1920 QUEEN ROAD
 BLAINVILLE, GA 30912

- APPROVAL, NOTES:
1. THE LOTS SHALL BE SEPARATED BY A 10' WIDE DRIVEWAY OR ALLEYWAY
 2. THE LOTS SHALL BE SEPARATED BY A 5' WIDE SIDEWALK OR DRIVEWAY
 3. THE LOTS SHALL BE SEPARATED BY A 5' WIDE DRIVEWAY OR ALLEYWAY
 4. THE LOTS SHALL BE SEPARATED BY A 5' WIDE DRIVEWAY OR ALLEYWAY
 5. THE LOTS SHALL BE SEPARATED BY A 5' WIDE DRIVEWAY OR ALLEYWAY
 6. THE LOTS SHALL BE SEPARATED BY A 5' WIDE DRIVEWAY OR ALLEYWAY
 7. THE LOTS SHALL BE SEPARATED BY A 5' WIDE DRIVEWAY OR ALLEYWAY
 8. THE LOTS SHALL BE SEPARATED BY A 5' WIDE DRIVEWAY OR ALLEYWAY
 9. THE LOTS SHALL BE SEPARATED BY A 5' WIDE DRIVEWAY OR ALLEYWAY
 10. THE LOTS SHALL BE SEPARATED BY A 5' WIDE DRIVEWAY OR ALLEYWAY
 11. THE LOTS SHALL BE SEPARATED BY A 5' WIDE DRIVEWAY OR ALLEYWAY
 12. THE LOTS SHALL BE SEPARATED BY A 5' WIDE DRIVEWAY OR ALLEYWAY
 13. THE LOTS SHALL BE SEPARATED BY A 5' WIDE DRIVEWAY OR ALLEYWAY
 14. THE LOTS SHALL BE SEPARATED BY A 5' WIDE DRIVEWAY OR ALLEYWAY
 15. THE LOTS SHALL BE SEPARATED BY A 5' WIDE DRIVEWAY OR ALLEYWAY
 16. THE LOTS SHALL BE SEPARATED BY A 5' WIDE DRIVEWAY OR ALLEYWAY
 17. THE LOTS SHALL BE SEPARATED BY A 5' WIDE DRIVEWAY OR ALLEYWAY
 18. THE LOTS SHALL BE SEPARATED BY A 5' WIDE DRIVEWAY OR ALLEYWAY
 19. THE LOTS SHALL BE SEPARATED BY A 5' WIDE DRIVEWAY OR ALLEYWAY
 20. THE LOTS SHALL BE SEPARATED BY A 5' WIDE DRIVEWAY OR ALLEYWAY
 21. THE LOTS SHALL BE SEPARATED BY A 5' WIDE DRIVEWAY OR ALLEYWAY
 22. THE LOTS SHALL BE SEPARATED BY A 5' WIDE DRIVEWAY OR ALLEYWAY
 23. THE LOTS SHALL BE SEPARATED BY A 5' WIDE DRIVEWAY OR ALLEYWAY
 24. THE LOTS SHALL BE SEPARATED BY A 5' WIDE DRIVEWAY OR ALLEYWAY
 25. THE LOTS SHALL BE SEPARATED BY A 5' WIDE DRIVEWAY OR ALLEYWAY
 26. THE LOTS SHALL BE SEPARATED BY A 5' WIDE DRIVEWAY OR ALLEYWAY
 27. THE LOTS SHALL BE SEPARATED BY A 5' WIDE DRIVEWAY OR ALLEYWAY
 28. THE LOTS SHALL BE SEPARATED BY A 5' WIDE DRIVEWAY OR ALLEYWAY
 29. THE LOTS SHALL BE SEPARATED BY A 5' WIDE DRIVEWAY OR ALLEYWAY
 30. THE LOTS SHALL BE SEPARATED BY A 5' WIDE DRIVEWAY OR ALLEYWAY
 31. THE LOTS SHALL BE SEPARATED BY A 5' WIDE DRIVEWAY OR ALLEYWAY
 32. THE LOTS SHALL BE SEPARATED BY A 5' WIDE DRIVEWAY OR ALLEYWAY
 33. THE LOTS SHALL BE SEPARATED BY A 5' WIDE DRIVEWAY OR ALLEYWAY
 34. THE LOTS SHALL BE SEPARATED BY A 5' WIDE DRIVEWAY OR ALLEYWAY

RIGHTS OF WAY CALLS

LOT NO.	RIGHTS OF WAY CALLS
1	...
2	...
3	...
4	...
5	...
6	...
7	...
8	...
9	...
10	...
11	...
12	...
13	...
14	...
15	...
16	...
17	...
18	...
19	...
20	...
21	...
22	...
23	...
24	...
25	...
26	...
27	...
28	...
29	...
30	...
31	...
32	...
33	...
34	...

LOT NO.	AREA (SQ. FT.)	AREA (AC.)
1
2
3
4
5
6
7
8
9
10
11
12
13
14
15
16
17
18
19
20
21
22
23
24
25
26
27
28
29
30
31
32
33
34

LOT NO.	AREA (SQ. FT.)	AREA (AC.)
1
2
3
4
5
6
7
8
9
10
11
12
13
14
15
16
17
18
19
20
21
22
23
24
25
26
27
28
29
30
31
32
33
34

TOTAL PLAT FOR:
TALLULAH LANDING
 LOCATED IN LAND LOTS 277 & 278
 IN DISTRICT 141, SECTION
 UNION COUNTY, GEORGIA

Blue Ridge Mountain
 Surveying, Inc.
 6214 Dillard Lane
 Marietta, GA 30066
 BRMS