

**Chaerty Log Survey Co., Inc.**  
 Joel Jordan CA RIS #2430  
 218 SPRING STREET  
 BULLY, GEORGIA 30540  
 PHONE 706-635-5577  
 FAX 706-635-5597

**SURVEY BY**  
 TOPCON GTS-213 TOTAL STATION  
 ANGULAR ERROR PER STATION = 12"  
 L.E.C. = 1' / 35,172'  
 ADJUSTMENT : ANGLES  
 THIS PLAT HAS BEEN  
 CALCULATED FOR CLOSURE  
 AND HAS BEEN FOUND TO  
 BE ACCURATE TO WITHIN  
 1 PER 145,439'

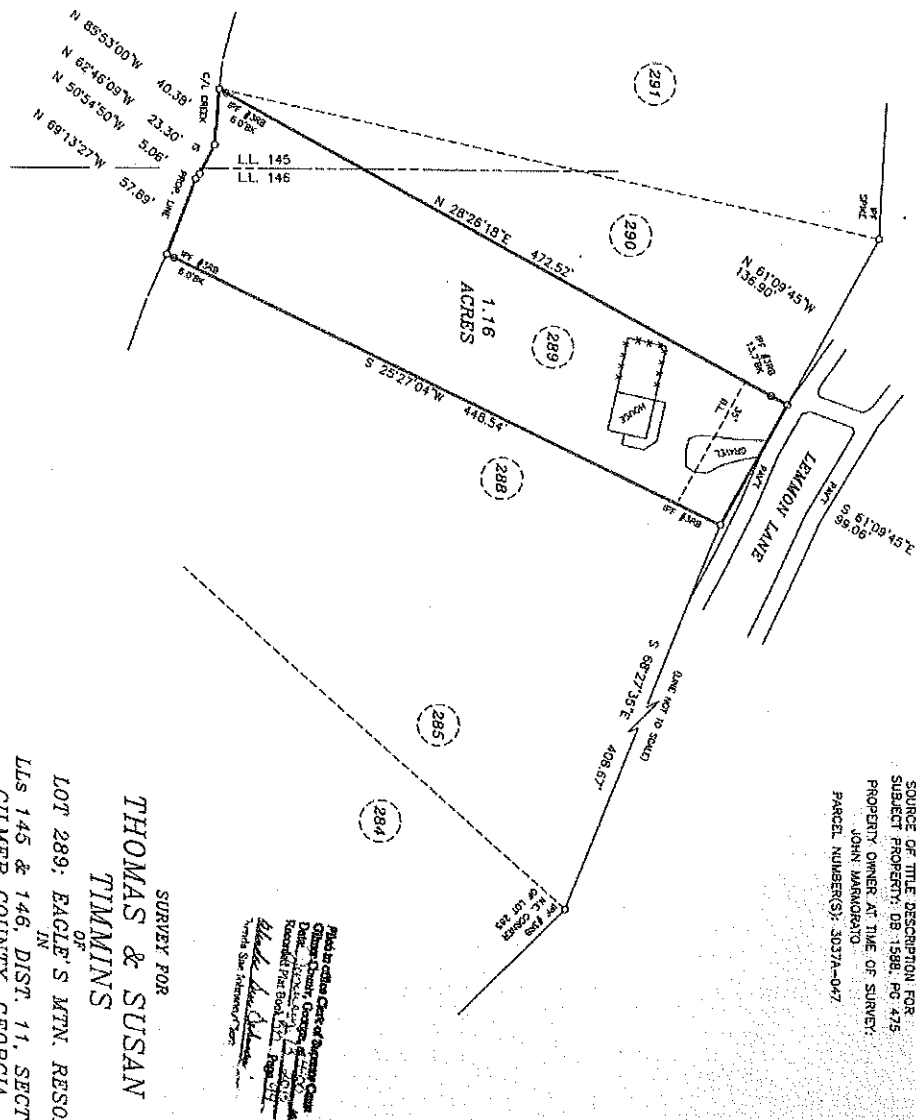
BASED ON MAPS PROVIDED BY GILMER COUNTY  
 I HEREBY CERTIFY THAT THIS PROJECT IS IN THE  
 FOLLOWING PROTECTION DISTRICTS:

NO. 1	WATER WATERSHED WATER SUPPLY
NO. 2	WATER WATERSHED WATER SUPPLY
NO. 3	WATER WATERSHED WATER SUPPLY
NO. 4	WATER WATERSHED WATER SUPPLY
NO. 5	WATER WATERSHED WATER SUPPLY
NO. 6	WATER WATERSHED WATER SUPPLY
NO. 7	WATER WATERSHED WATER SUPPLY
NO. 8	WATER WATERSHED WATER SUPPLY
NO. 9	WATER WATERSHED WATER SUPPLY
NO. 10	WATER WATERSHED WATER SUPPLY
NO. 11	WATER WATERSHED WATER SUPPLY
NO. 12	WATER WATERSHED WATER SUPPLY
NO. 13	WATER WATERSHED WATER SUPPLY
NO. 14	WATER WATERSHED WATER SUPPLY
NO. 15	WATER WATERSHED WATER SUPPLY
NO. 16	WATER WATERSHED WATER SUPPLY
NO. 17	WATER WATERSHED WATER SUPPLY
NO. 18	WATER WATERSHED WATER SUPPLY
NO. 19	WATER WATERSHED WATER SUPPLY
NO. 20	WATER WATERSHED WATER SUPPLY
NO. 21	WATER WATERSHED WATER SUPPLY
NO. 22	WATER WATERSHED WATER SUPPLY
NO. 23	WATER WATERSHED WATER SUPPLY
NO. 24	WATER WATERSHED WATER SUPPLY
NO. 25	WATER WATERSHED WATER SUPPLY
NO. 26	WATER WATERSHED WATER SUPPLY
NO. 27	WATER WATERSHED WATER SUPPLY
NO. 28	WATER WATERSHED WATER SUPPLY
NO. 29	WATER WATERSHED WATER SUPPLY
NO. 30	WATER WATERSHED WATER SUPPLY
NO. 31	WATER WATERSHED WATER SUPPLY
NO. 32	WATER WATERSHED WATER SUPPLY
NO. 33	WATER WATERSHED WATER SUPPLY
NO. 34	WATER WATERSHED WATER SUPPLY
NO. 35	WATER WATERSHED WATER SUPPLY
NO. 36	WATER WATERSHED WATER SUPPLY
NO. 37	WATER WATERSHED WATER SUPPLY
NO. 38	WATER WATERSHED WATER SUPPLY
NO. 39	WATER WATERSHED WATER SUPPLY
NO. 40	WATER WATERSHED WATER SUPPLY
NO. 41	WATER WATERSHED WATER SUPPLY
NO. 42	WATER WATERSHED WATER SUPPLY
NO. 43	WATER WATERSHED WATER SUPPLY
NO. 44	WATER WATERSHED WATER SUPPLY
NO. 45	WATER WATERSHED WATER SUPPLY
NO. 46	WATER WATERSHED WATER SUPPLY
NO. 47	WATER WATERSHED WATER SUPPLY
NO. 48	WATER WATERSHED WATER SUPPLY
NO. 49	WATER WATERSHED WATER SUPPLY
NO. 50	WATER WATERSHED WATER SUPPLY
NO. 51	WATER WATERSHED WATER SUPPLY
NO. 52	WATER WATERSHED WATER SUPPLY
NO. 53	WATER WATERSHED WATER SUPPLY
NO. 54	WATER WATERSHED WATER SUPPLY
NO. 55	WATER WATERSHED WATER SUPPLY
NO. 56	WATER WATERSHED WATER SUPPLY
NO. 57	WATER WATERSHED WATER SUPPLY
NO. 58	WATER WATERSHED WATER SUPPLY
NO. 59	WATER WATERSHED WATER SUPPLY
NO. 60	WATER WATERSHED WATER SUPPLY
NO. 61	WATER WATERSHED WATER SUPPLY
NO. 62	WATER WATERSHED WATER SUPPLY
NO. 63	WATER WATERSHED WATER SUPPLY
NO. 64	WATER WATERSHED WATER SUPPLY
NO. 65	WATER WATERSHED WATER SUPPLY
NO. 66	WATER WATERSHED WATER SUPPLY
NO. 67	WATER WATERSHED WATER SUPPLY
NO. 68	WATER WATERSHED WATER SUPPLY
NO. 69	WATER WATERSHED WATER SUPPLY
NO. 70	WATER WATERSHED WATER SUPPLY
NO. 71	WATER WATERSHED WATER SUPPLY
NO. 72	WATER WATERSHED WATER SUPPLY
NO. 73	WATER WATERSHED WATER SUPPLY
NO. 74	WATER WATERSHED WATER SUPPLY
NO. 75	WATER WATERSHED WATER SUPPLY
NO. 76	WATER WATERSHED WATER SUPPLY
NO. 77	WATER WATERSHED WATER SUPPLY
NO. 78	WATER WATERSHED WATER SUPPLY
NO. 79	WATER WATERSHED WATER SUPPLY
NO. 80	WATER WATERSHED WATER SUPPLY
NO. 81	WATER WATERSHED WATER SUPPLY
NO. 82	WATER WATERSHED WATER SUPPLY
NO. 83	WATER WATERSHED WATER SUPPLY
NO. 84	WATER WATERSHED WATER SUPPLY
NO. 85	WATER WATERSHED WATER SUPPLY
NO. 86	WATER WATERSHED WATER SUPPLY
NO. 87	WATER WATERSHED WATER SUPPLY
NO. 88	WATER WATERSHED WATER SUPPLY
NO. 89	WATER WATERSHED WATER SUPPLY
NO. 90	WATER WATERSHED WATER SUPPLY
NO. 91	WATER WATERSHED WATER SUPPLY
NO. 92	WATER WATERSHED WATER SUPPLY
NO. 93	WATER WATERSHED WATER SUPPLY
NO. 94	WATER WATERSHED WATER SUPPLY
NO. 95	WATER WATERSHED WATER SUPPLY
NO. 96	WATER WATERSHED WATER SUPPLY
NO. 97	WATER WATERSHED WATER SUPPLY
NO. 98	WATER WATERSHED WATER SUPPLY
NO. 99	WATER WATERSHED WATER SUPPLY
NO. 100	WATER WATERSHED WATER SUPPLY

NOTE:  
 THIS PROPERTY IS NOT IN A 100  
 YEAR FLOOD HAZARD AREA AS PER  
 FEMA FLOOD HAZARD BOUNDARY MAP  
 NUMBER 13000150 B  
 DATED 8/15/1990

AGRICULTURE NOTICE - GILMER COUNTY HAS AN ACTIVE  
 AGRICULTURAL SECTOR. FARMING AND FORESTING ACTIVITIES  
 MAY CAUSE NUISANCES AND INCONVENIENCES THAT ARE ASSOCIATED  
 WITH SUCH LAWFUL ACTIVITIES. (O.C.G.A. 44-1-17)

**SURVEY DATA**  
 TYPE OF SURVEY: RETRACEMENT  
 SOURCE OF TITLE DESCRIPTION FOR  
 SUBJECT PROPERTY: DB 1598, PG 475  
 PROPERTY OWNER AT TIME OF SURVEY:  
 JOHN WARGARATO  
 PARCEL NUMBER(S): 3037A-047



1. I certify that this survey represents a retracement of the boundaries of an  
 existing parcel(s) of land, the description of which is shown on the  
 book(s) 12 and page(s) 649 or this survey represents a lot of  
 record as defined in the County's Land Development Ordinance. It is further  
 certified that this survey does not create an isolated parcel or a new parcel  
 and is the above described parcel in its entirety and not only a portion thereof.

**SURVEY FOR**  
**THOMAS & SUSAN**  
**TIMMINS**  
 OF  
**LOT 289, EAGLE'S MTN. RESORT**  
 IN  
**LOT 145 & 146, DIST. 11, SECT. 2**  
**CIMMER COUNTY, GEORGIA**  
 SCALE: 1" = 60'  
 DECEMBER 16, 2014  
 FIELD WORK: 12/15/2014



Professional Seal of Surveyor  
 Date: 12/15/2014  
 Registered Professional Surveyor  
 State of Georgia  
 No. 12345  
 John W. Wargarato

