

NOTE  
This survey subject to all rights-of-way and  
easements. Acreage shown, calculated,  
using dimensions shown on plot.

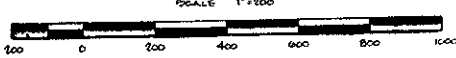
NOTE  
The bearings shown on this survey were  
calculated from a meridian traverse using  
field angles and a single magnetic decli-  
nation. The bearings may differ from  
previous surveys due to magnetic decli-  
nation, even though the property lines  
are the same.



WILLIAM W. MULLIN, JR. ENGINEER  
A LAND & ENGINEERING SURVEYOR  
LEGAL AND RECORDABLE  
SURVEYS IN GA.  
TAMU, N.C.  
1804) 832-3319  
1804) 428-4787  
1704) 837-8277

### UNION ACRES

LAND LOT 41 8TH DISTRICT 2ND SECTION  
FANNING COUNTY, GA JUNE 26, 1980



SURVEY REFERENCE  
PLAT BY LAND & ENGINEERING SURVEYOR  
DATED JULY 22, 1989

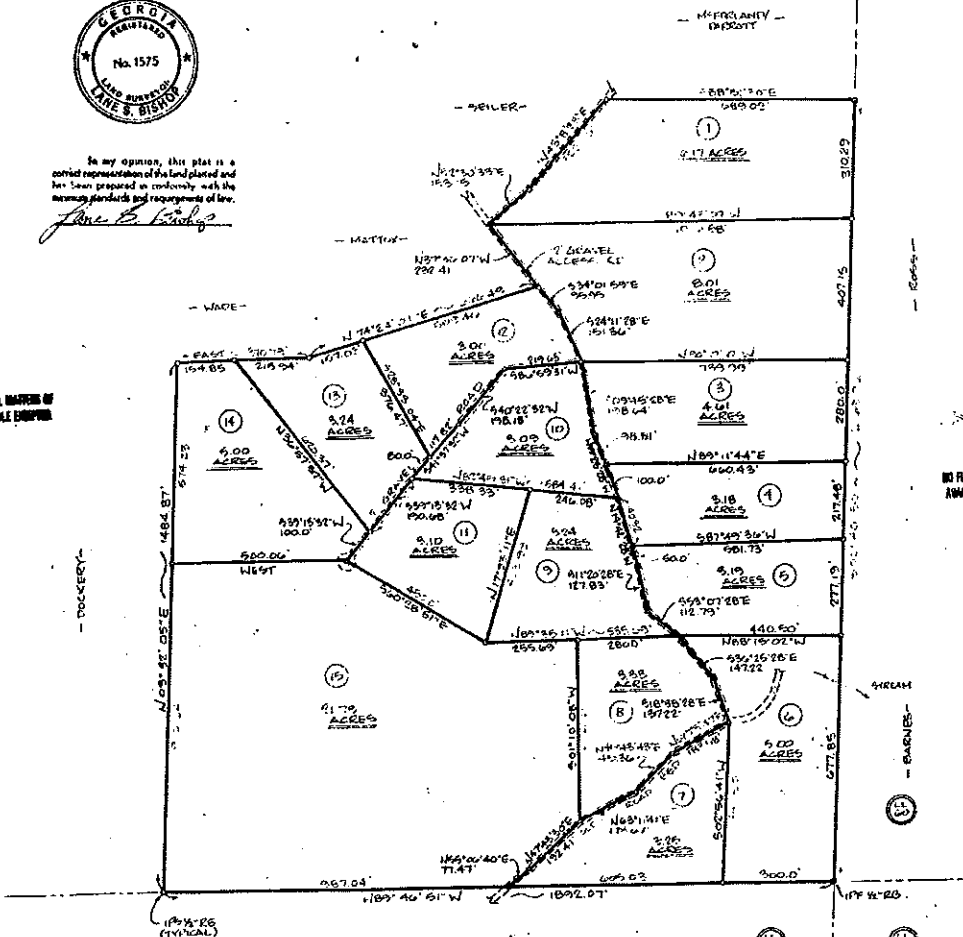
NOTE  
This survey performed using a H & B  
Paragon 307 Transit and 100' steel tape.  
A computer used for all calculations.

The map of plat has been calculated  
for closure and is found to be accurate  
within one foot in 100,000 feet.



In my opinion, this plat is a  
correct representation of the land plotted and  
has been prepared in conformity with the  
existing standards and requirements of law.  
*Larry S. Bishop*

ALL DIMENSIONS  
IN FEET UNLESS  
NOTED OTHERWISE



NO FLOOD HAZARD MAPS  
AVAILABLE FOR THIS AREA

The field data upon which this map or  
plat is based has a closure precision of  
one foot in 100,000 feet and an  
angular error of one second per  
point, and was adjusted using the  
rule.

GEORGIA, FANNING COUNTY, PLAT OFFICE RECORD COPY  
Filed for Record 30 days of Date...  
11/22/89 M. Bishop  
*Larry S. Bishop*

11/22/89 0-34