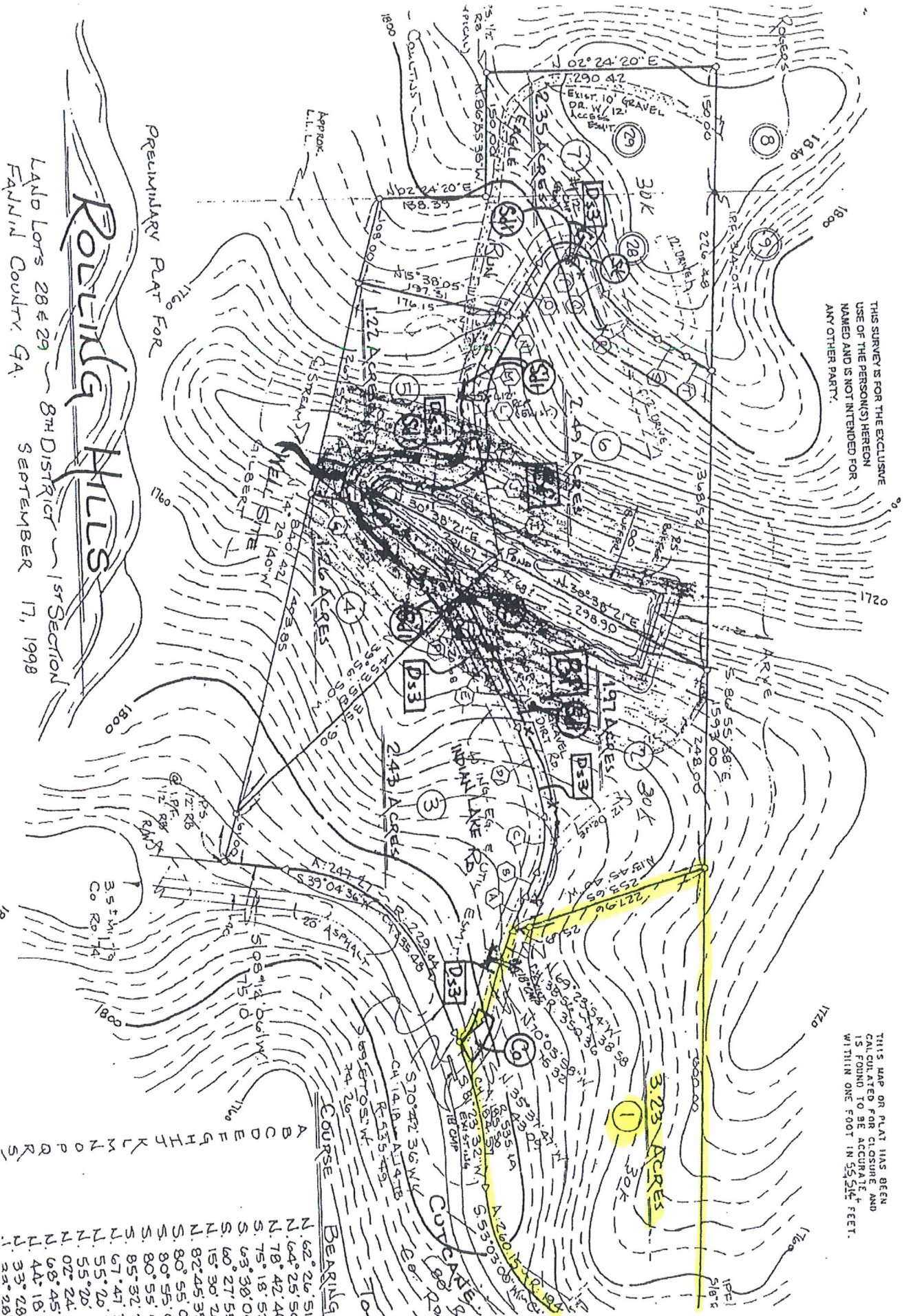


THIS SURVEY IS FOR THE EXCLUSIVE USE OF THE PERSON(S) HEREOF NAMED AND IS NOT INTENDED FOR ANY OTHER PARTY.

THIS MAP ON PLAT HAS BEEN CALCULATED FOR CLOSURE AND IS FOUND TO BE ACCURATE WITHIN ONE FOOT IN 3225 FEET.



COURSE	BEARINGS
A	N. 62° 26' 51"
B	N. 64° 25' 56"
C	N. 78° 42' 44"
D	S. 75° 18' 51"
E	S. 63° 30' 01"
F	S. 60° 27' 53"
G	N. 15° 30' 71"
H	N. 82° 45' 35"
I	S. 80° 55' 00"
J	S. 80° 55' 00"
K	S. 85° 32' 41"
L	N. 57° 47' 13"
M	S. 55° 20' 07"
N	S. 07° 24' 45"
O	N. 44° 16' 33"
P	S. 33° 28' 22"
Q	S. 22° 28' 22"

Preliminary Plat For  
**ROLINDA HILLS**  
 Land Lots 28 & 29 - 8th District - 1st Section  
 FANNIN COUNTY, GA. SEPTEMBER 17, 1998