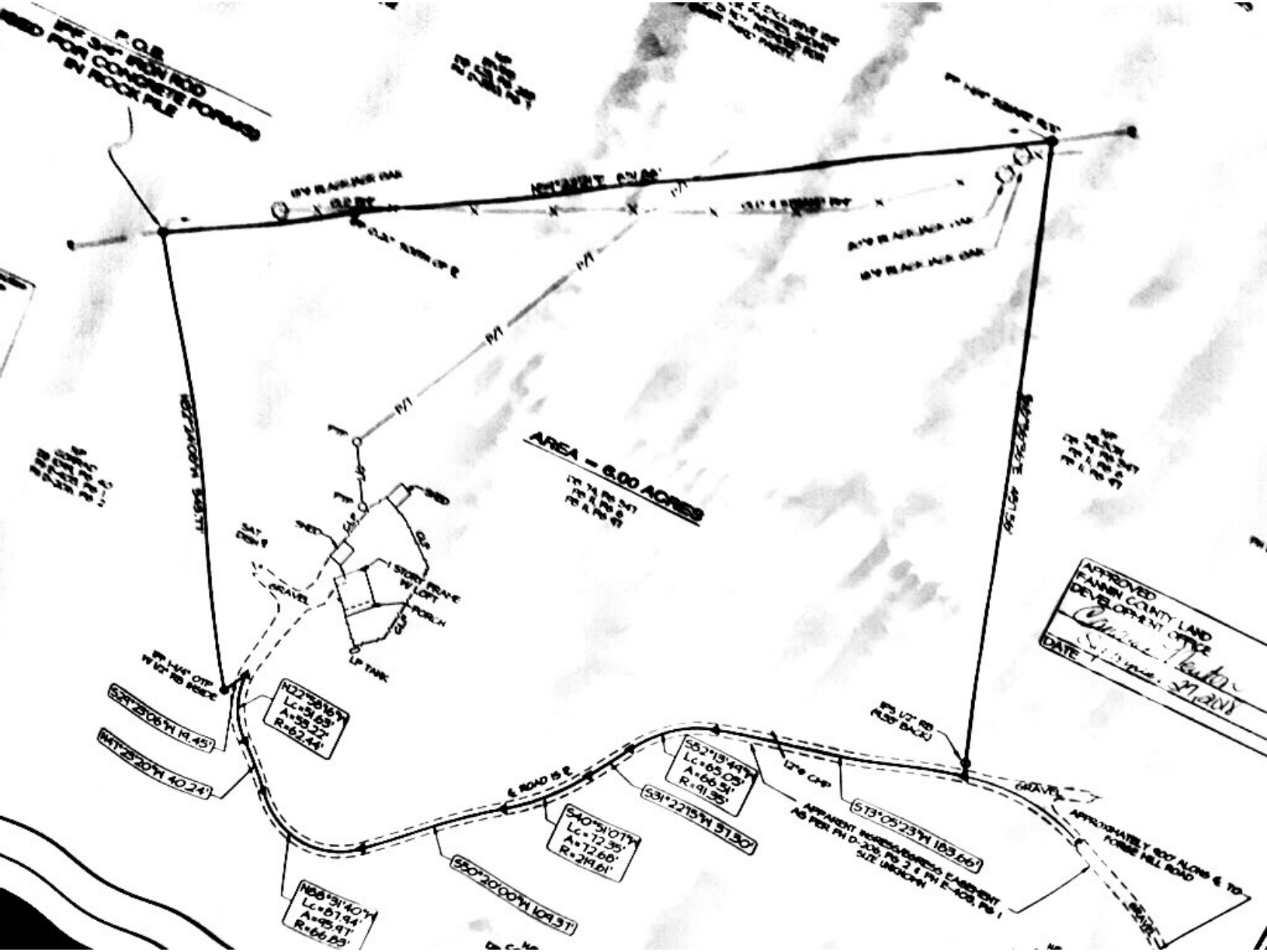


P.O.B.
FOR CONCRETE FORMS
BY ROCK FILE

EXCLUDE IN
TO BE ADDED TO
TOTAL ACRES

AREA = 6.00 ACRES
17 7/8 FT BY 27
20 1/2 FT BY 29

APPROVED
FANNIN COUNTY LAND
DEVELOPMENT OFFICE
Carroll Hunter
DATE *5/11/2011*



APPROXIMATELY 100' ALONG E TO
FORBELL ROAD

122°28'19\"/>
Lc=21.69'
A=25.22'
R=67.24'

55°19'49\"/>
Lc=65.00'
A=66.51'
R=91.35'

54°0'10\"/>
Lc=72.35'
A=72.60'
R=219.61'

513°05'23\"/>
Lc=163.66'

166°51'40\"/>
Lc=87.94'
A=85.97'
R=60.65'

59°20'00\"/>
Lc=109.37'

51°28'06\"/>
Lc=11.45'

117°28'06\"/>
Lc=40.24'

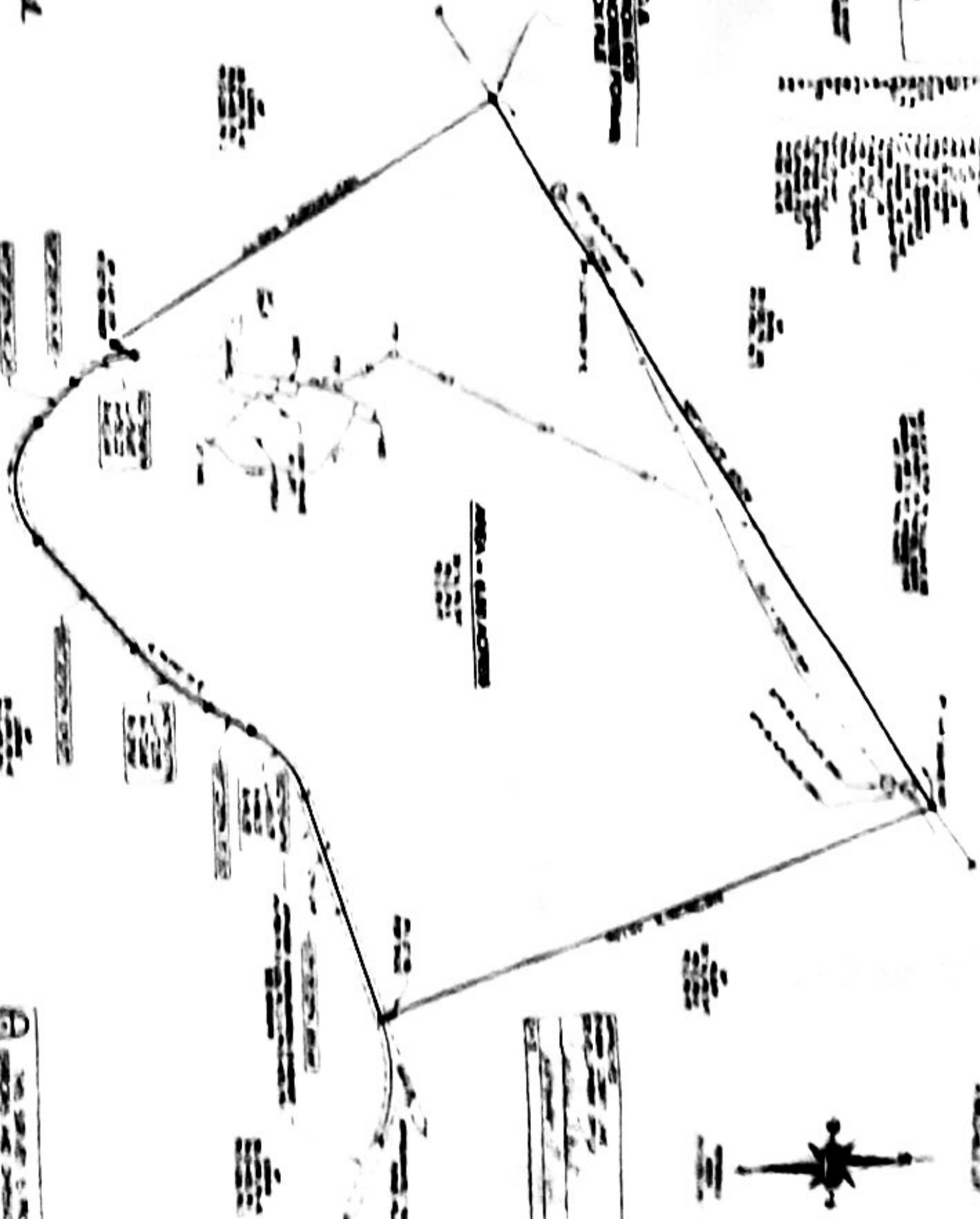
THE STATE OF TEXAS
COUNTY OF [illegible]

BY SAID SURVEYOR
AND FOR CONVEYING FROM
A BOOK FILE

[illegible text]

[illegible text]

[illegible text]



[illegible text]